



BENDHEIM



J@H® **77%**



Cont. length
® **23** ft.



Curve radius
- **7** ft.



Weight
® **5.25**
lbs/ft²



U-Value
- **0.19**



C=H7® **36**



GH7® **43**



As few as **3**
installers

creates walls of light – with depth and profile
unachievable through conventional flat glass. It

building walls and flat architectural glass alike,



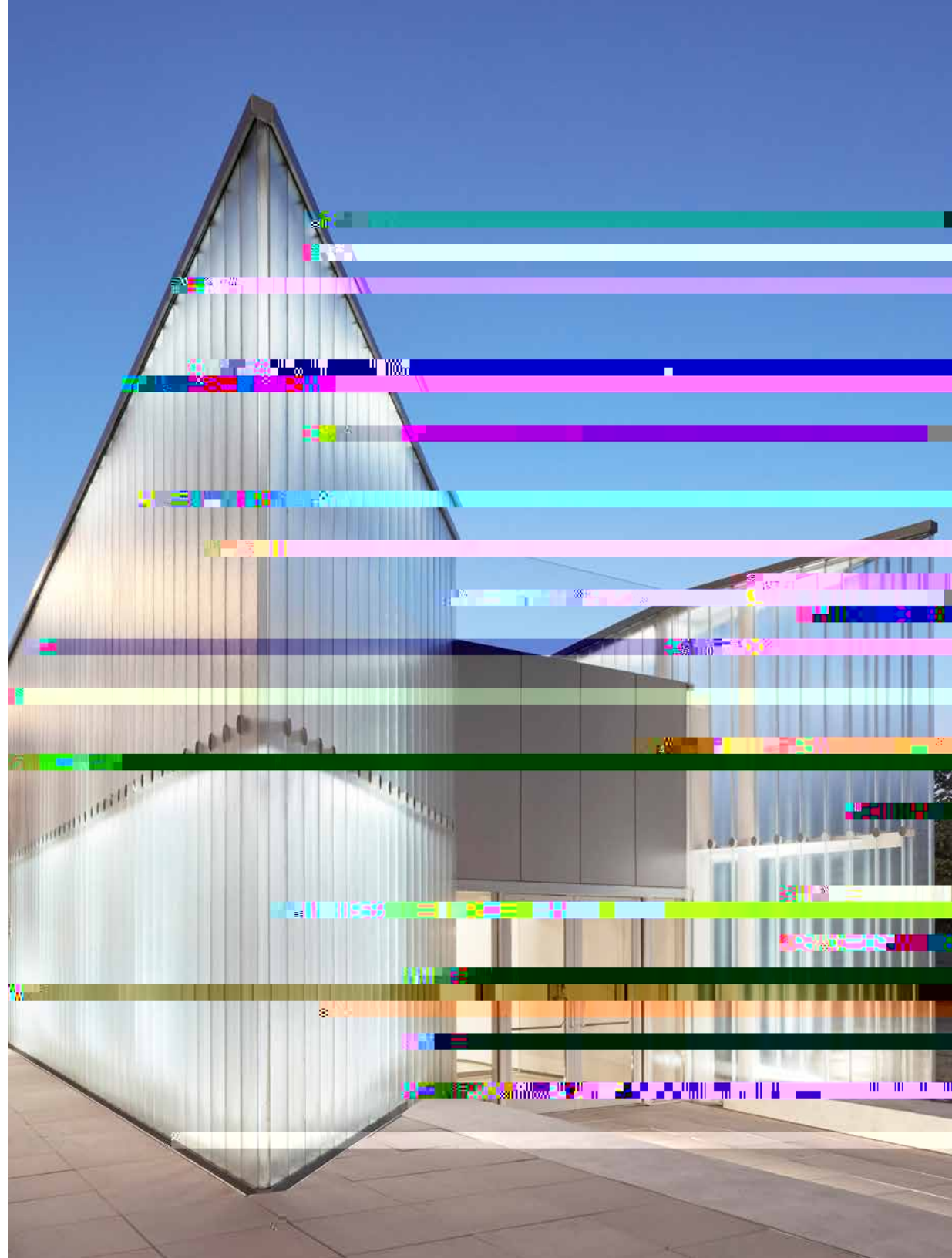
STC 43 – better than 4.5 (114 mm) batt-

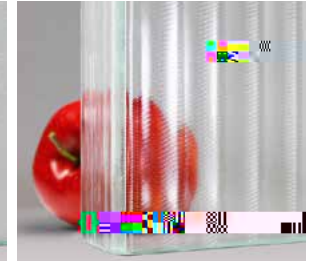


All the benefits of daylighting with added

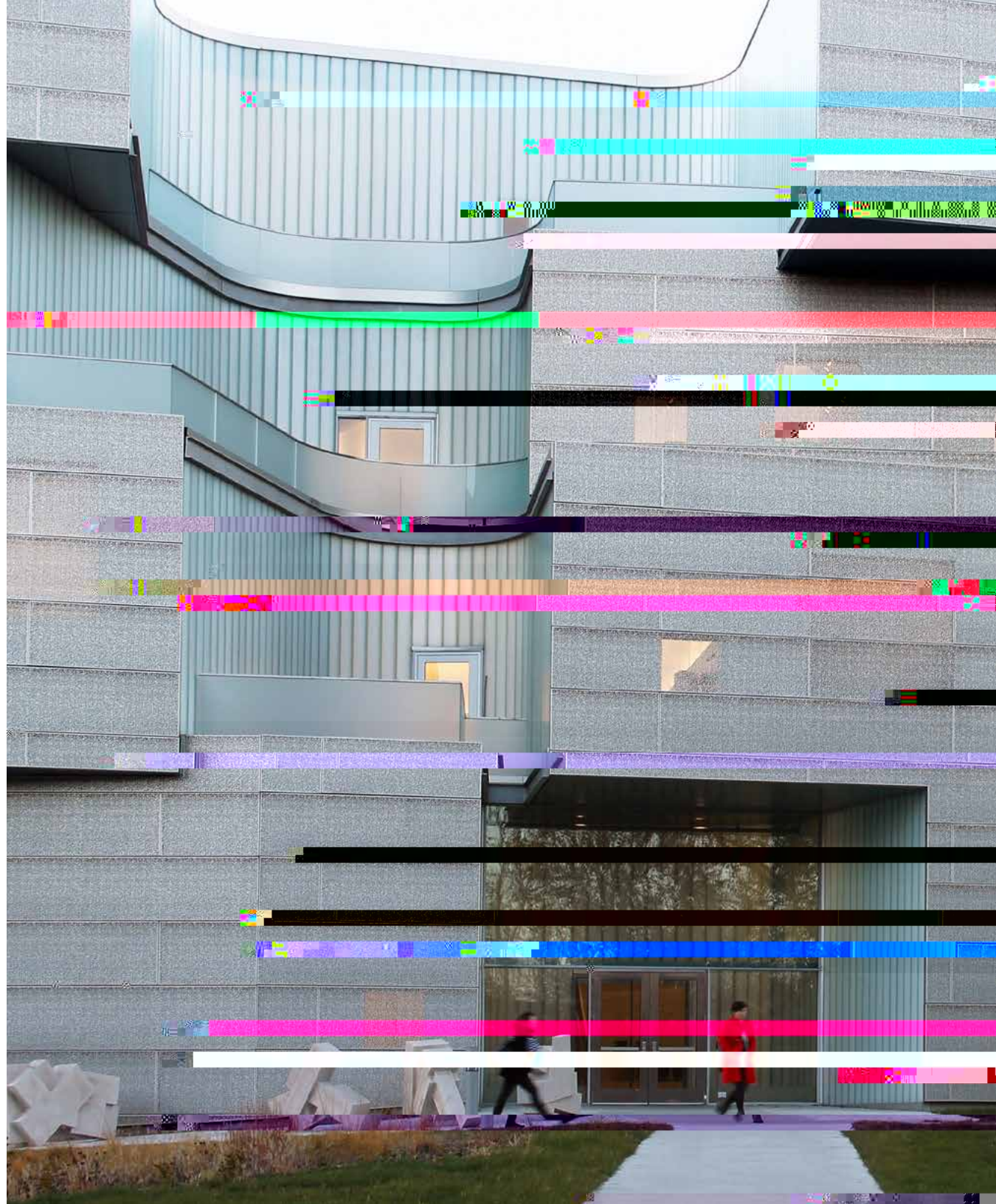


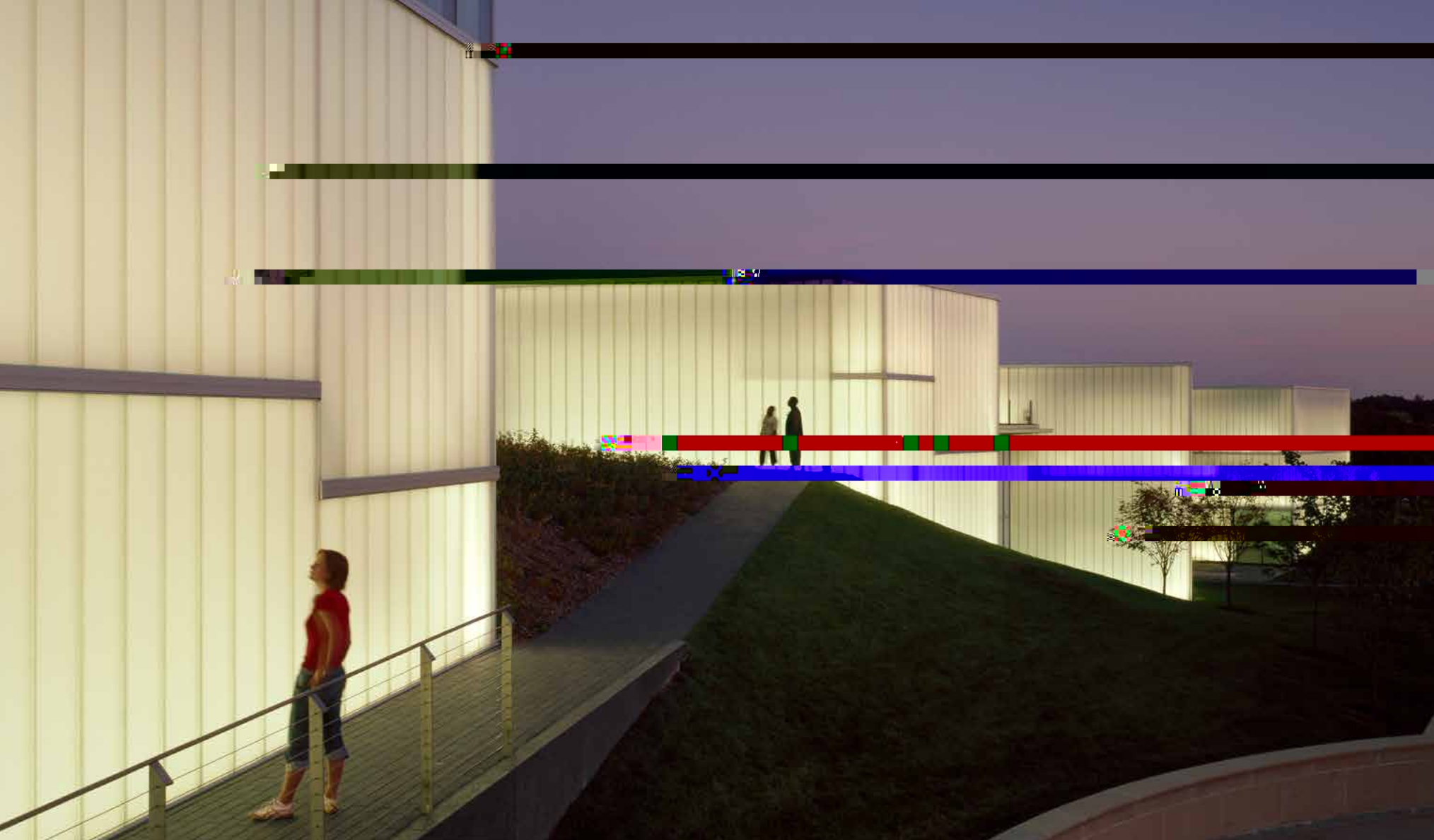
Bird-friendly tested and certified





BENDHEIM CHANNEL GLASS WALL SYSTEMS





BENDHEIM